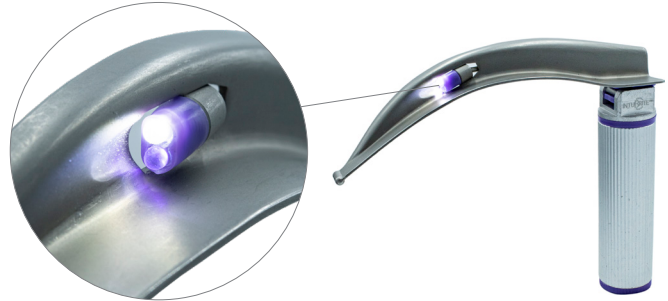


# INTUBRITE® DUAL LED DISPOSABLE LARYNGOSCOPES

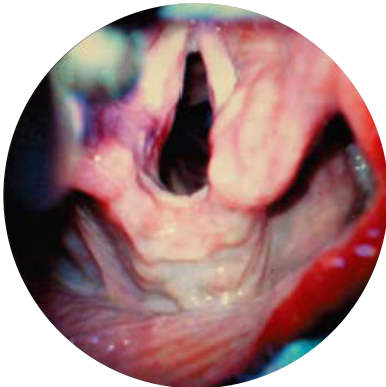
## RAISING THE BAR FOR AIRWAY ILLUMINATION

### DUAL LED LIGHT QUALITY

- Blended ultraviolet + white LED lights
- Improved clarity and definition, without glare
- Anatomy glows
- UV light provides unique bright detail



### INTUBRITE® ULTRAVIOLET + WHITE DUAL LED



### COMPETITIVE FIBER-OPTIC LED



### “2-CLICK” ENGAGEMENT

- Ensures bulbs in blade are securely engaged to power source in handle

‘1-Click’ – No gap at groove



‘2-Click’ – Minimal heel protrusion

